

The Port Jefferson Free Library **Looking to the Future**

**2nd Public Forum to Discuss
Potential Renovation/
Expansion Concepts**
November 9, 2016



**Architects
Landscape Architects
Engineers**

Community Input from the 1st Forum:

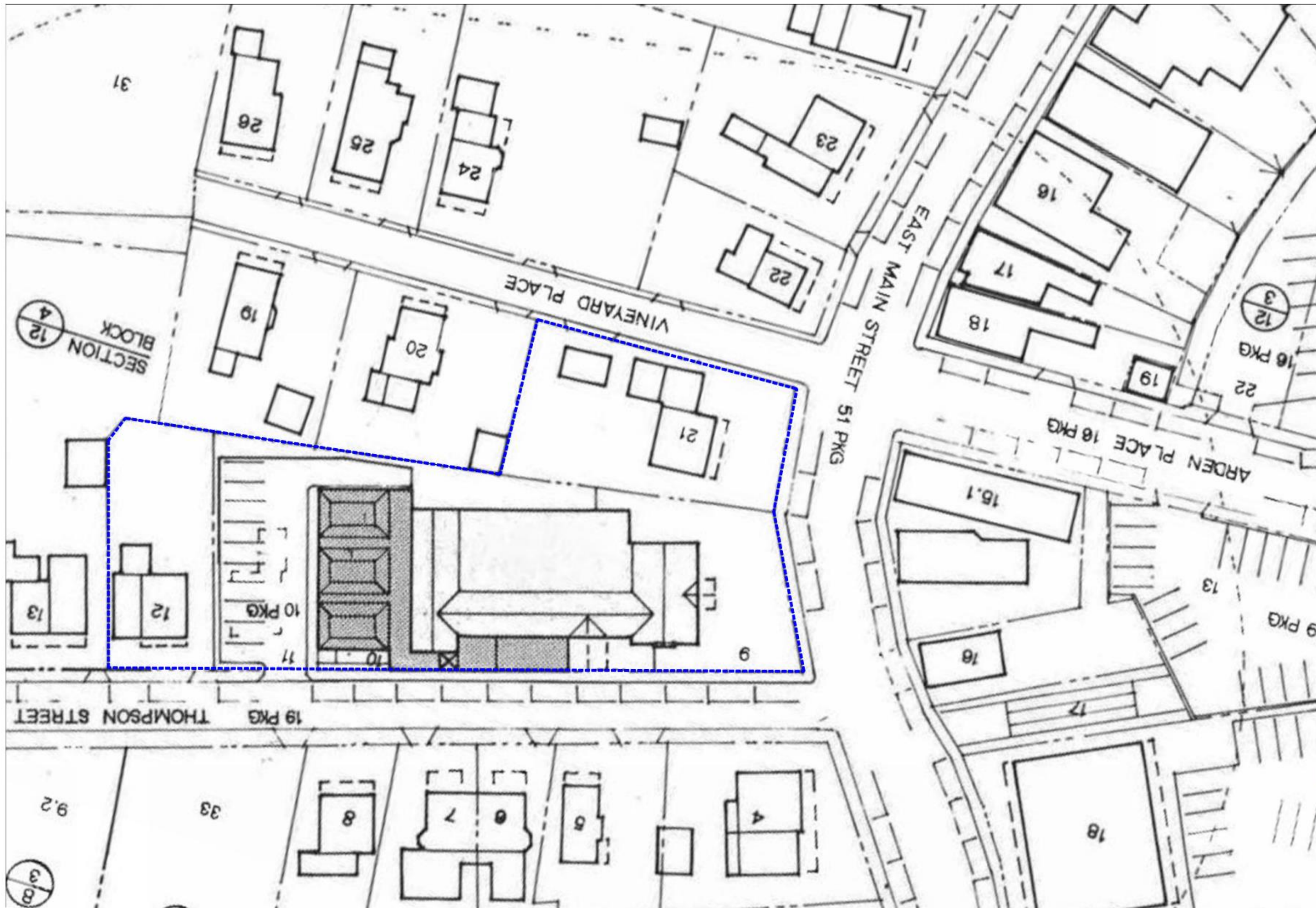
- **Expand Computer Room**
- **Parking at Thompson**
- **Teen Center @ Main Building**
- **Aesthetic Quality of 1924 Space**
- **Join Main Library & House**
- **Historic Quality of House**
- **Main Building Exiting**
- **Elevator/ Access**
- **Respect Integrity of Bayles**
- **Respect Neighbors**

Community Input from the 1st Forum:

- **Better Exhibition Space**
- **More Comfortable Chairs**
- **Better Periodicals**
- **Build Up?**
- **Meeting Room is too small, etc. (needs stage, etc.)**
- **Community Needs Gathering Space(s)**
- **Expand East/ Park Under?**
- **Green Space vs. Built Space (balance)**
- **Solar Panels? (sustainable/ rebate opportunities)**
- **Historical Element to influence Programs**

Community Input from the 1st Forum:

- **Infrastructure Upgrades (Lighting, HVAC, etc.)**
- **Possible “Atrium” behind Bayles?**
- **Garden/ Green @ Rooftops?**
- **Make sure Building Elements “flow”**
- **Reading Room behind Bayles?**
- **Quiet Study Space is important to have (in general)**



THE PORT JEFFERSON FREE LIBRARY

EXISTING SURROUNDING NEIGHBORHOOD DIAGRAM

(REFERENCE BY OTHERS)



BBS

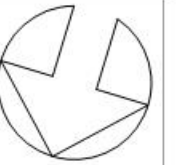
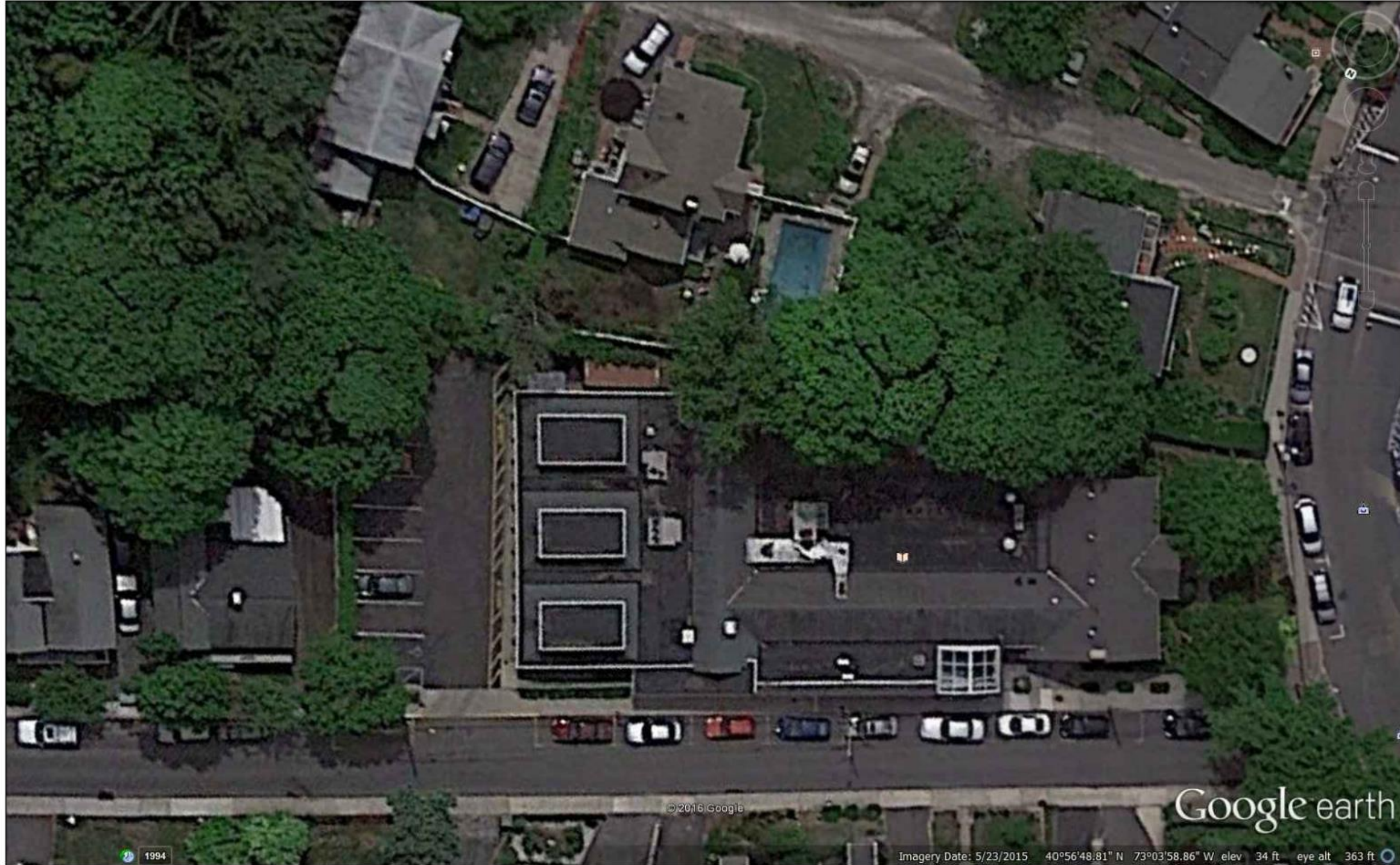
Architects
Landscape Architects
Engineers

100 East Main Street, Port Jefferson, New York 11777
631-271-0000

06-20-16

PJL-01

1" = 40'-0"



THE PORT JEFFERSON FREE LIBRARY
EXISTING SURROUNDING NEIGHBORHOOD DIAGRAM
(GOOGLE EARTH AERIAL)

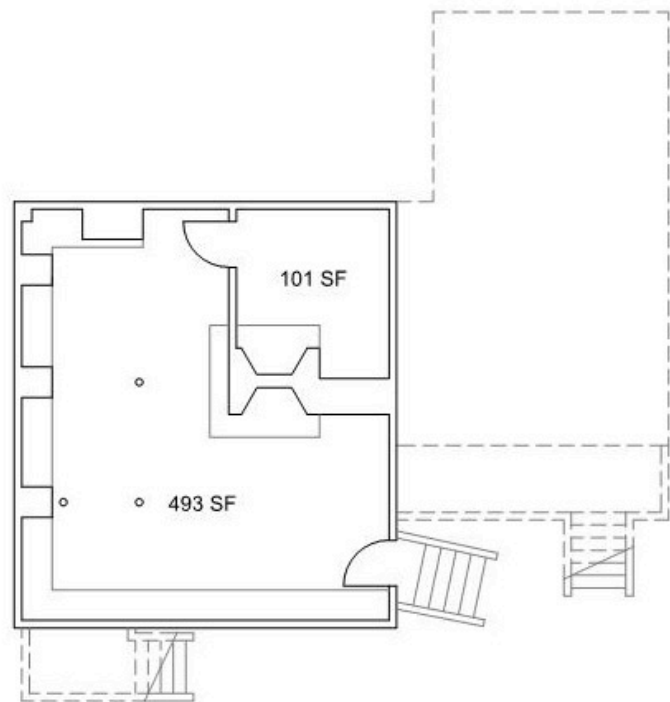


Architects
Landscape Architects
Engineers
200 East Main Street, Port Jefferson, New York 11777
(516) 471-1000
www.portjeffersonlibrary.org

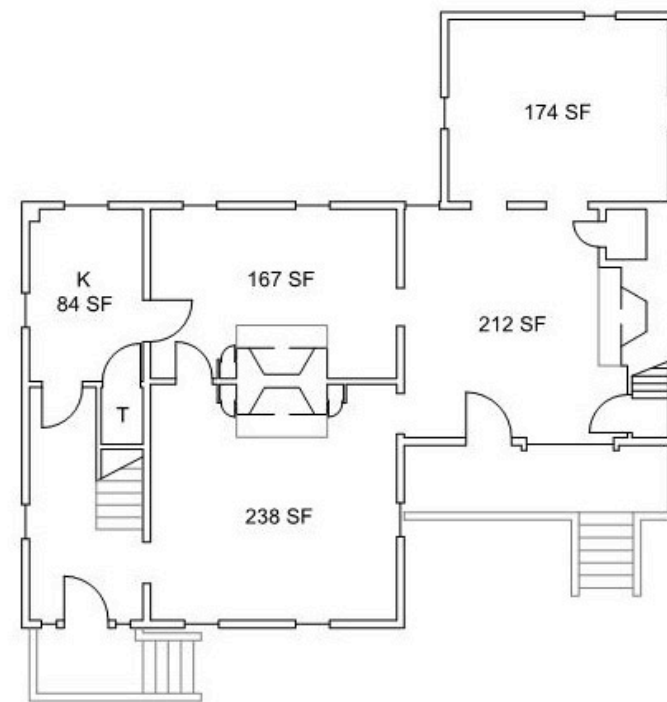
06-20-16

PJL-02

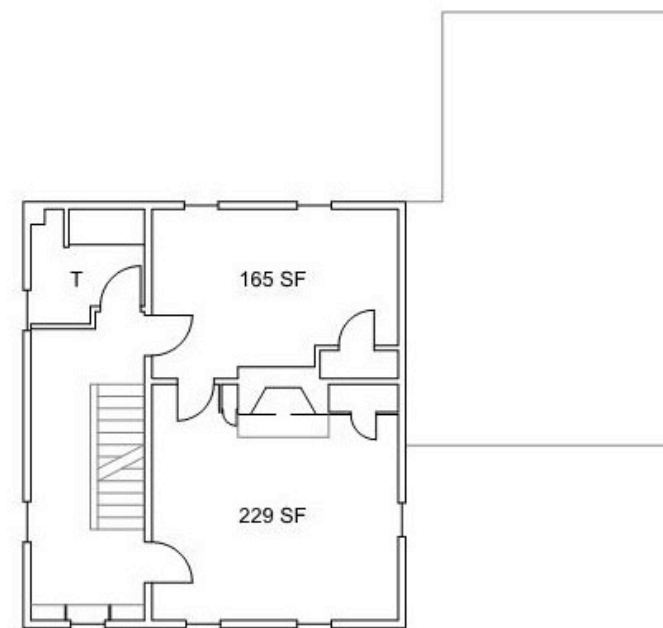
1" = 30'-0"



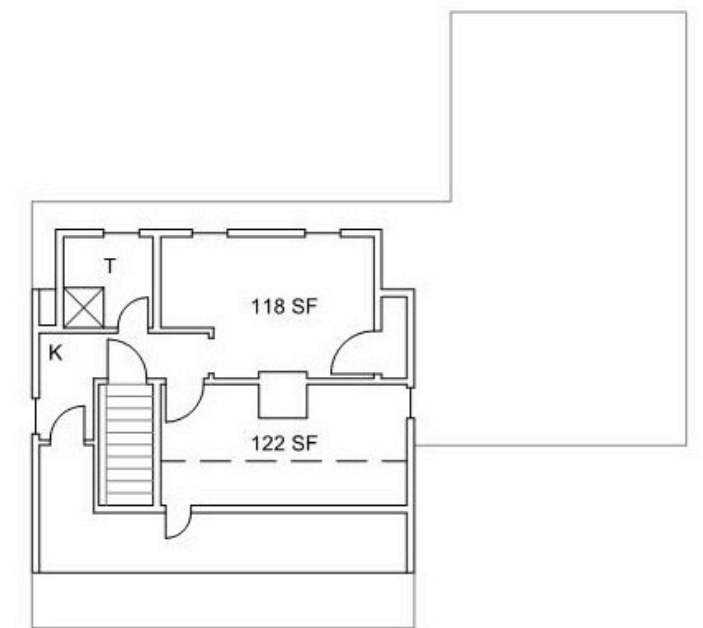
Basement
710 GSF
2,982 GSF O.A.



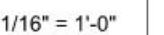
First Floor
1,193 GSF

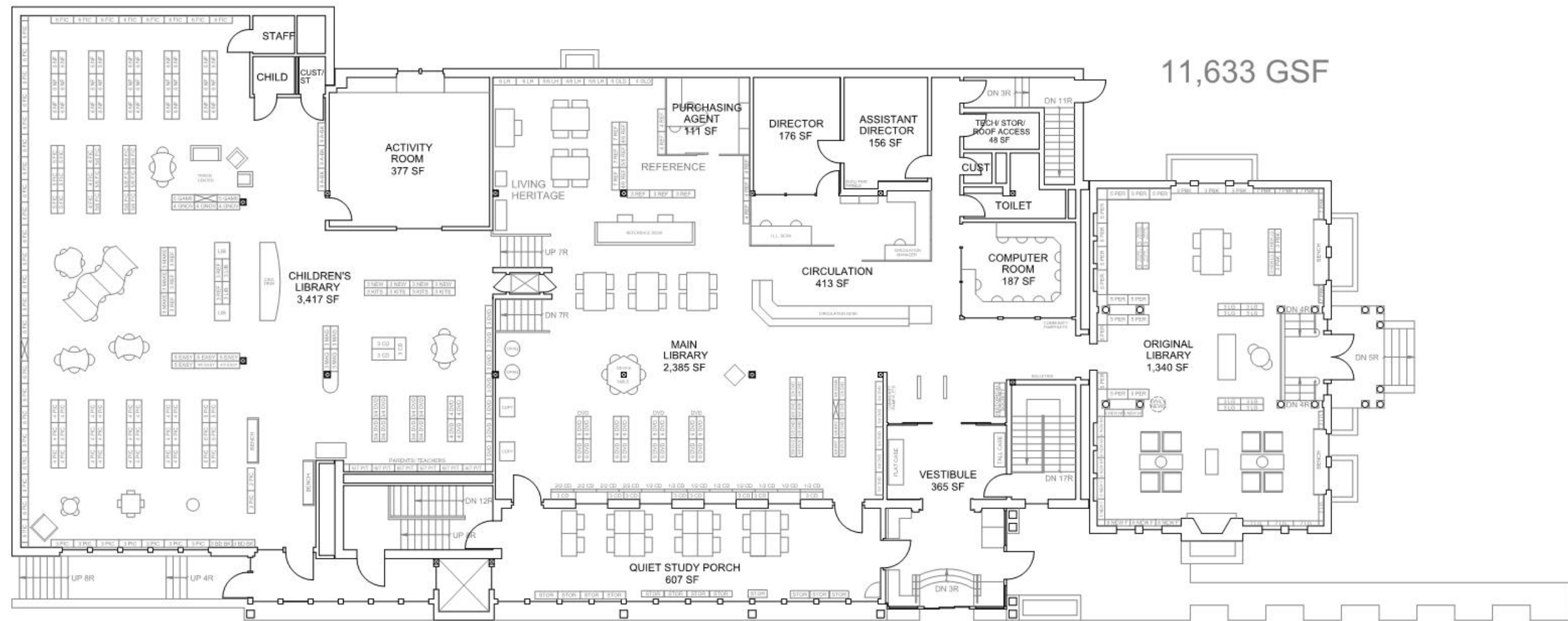


Second Floor
676 GSF



Third Floor
403 GSF

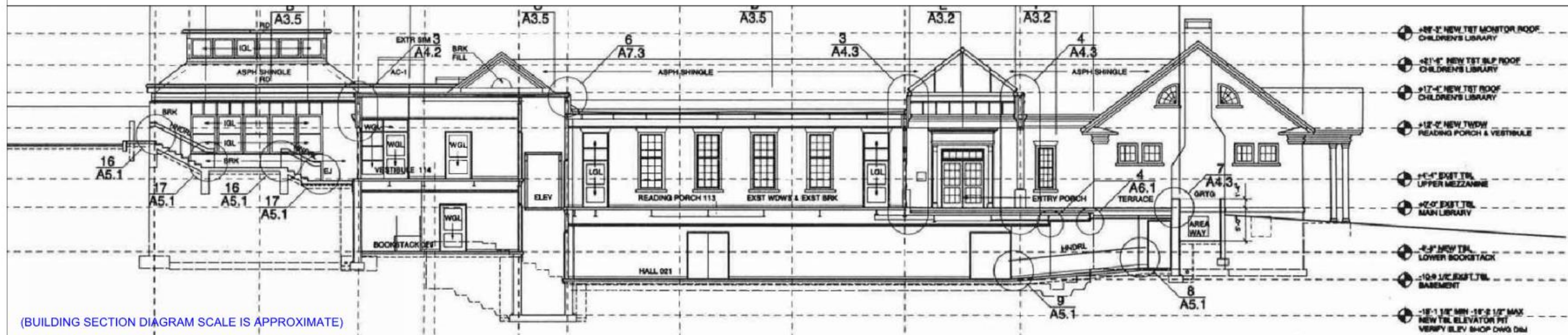




Existing Main Floor Plan – Main Library



THE PORT JEFFERSON FREE LIBRARY
 EXISTING MAIN LEVEL FLOOR PLAN DIAGRAM
 (REFERENCE NORTH-SOUTH BUILDING SECTION BY OTHERS)

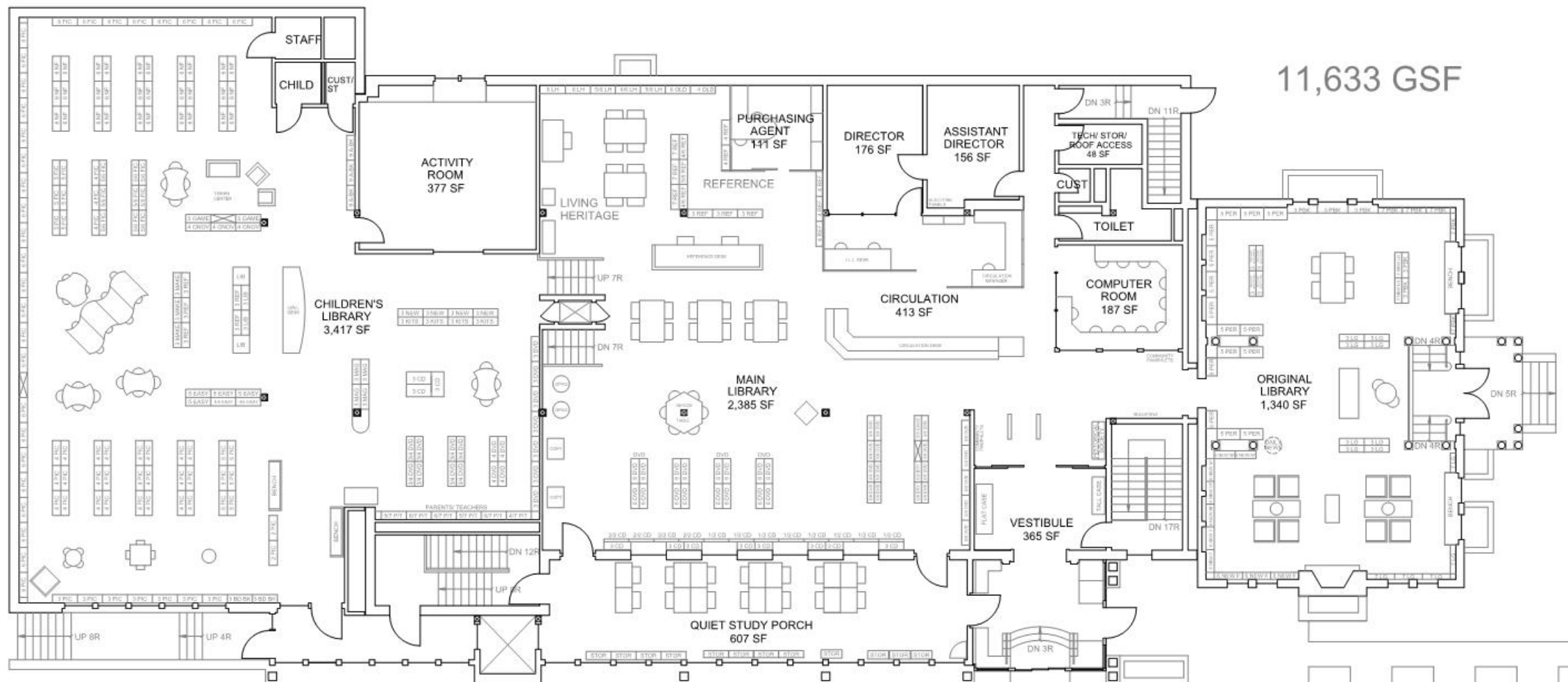


PJE BBS
 Architects
 Landscape Architects
 Engineers

06-20-16

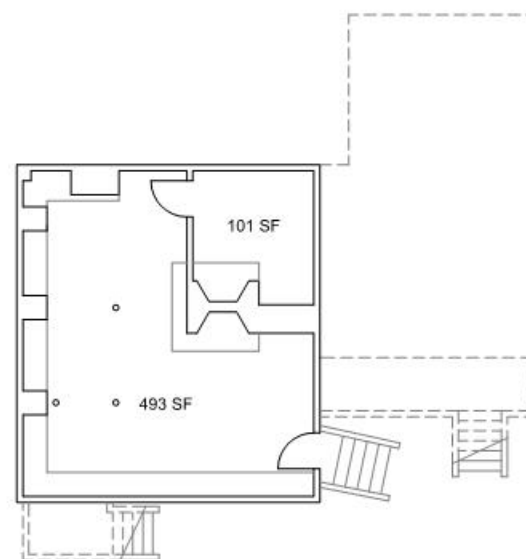
PJL-04

1/16" = 1'-0"

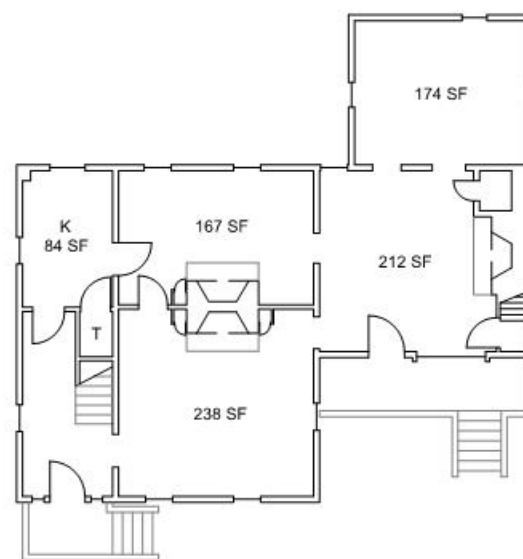


Existing Main Floor Plan – Main Library

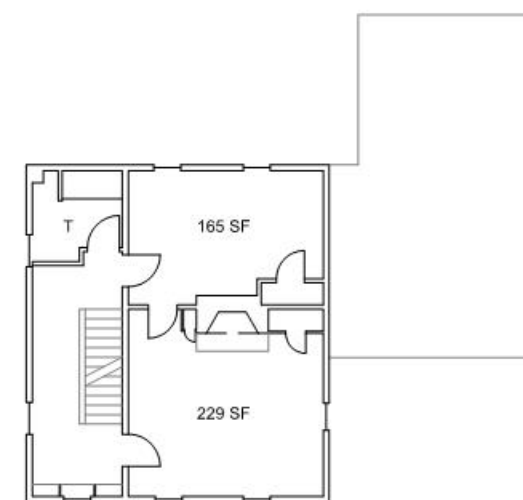
Teen & Friends



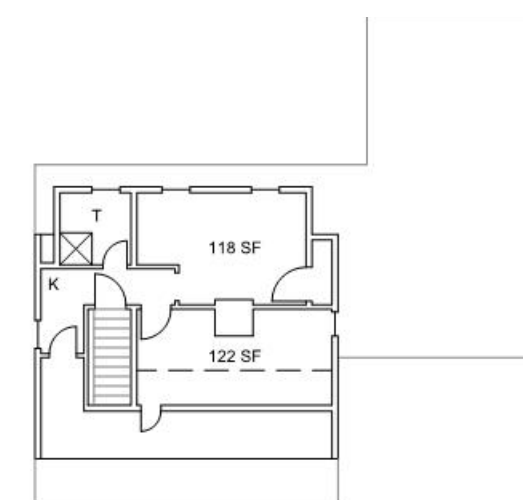
BAYLES HOUSE
BASEMENT FLOOR PLAN
710 GSF
2,982 GSF O.A.



BAYLES HOUSE
FIRST FLOOR PLAN
1,193 GSF

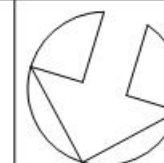


BAYLES HOUSE
SECOND FLOOR PLAN
676 GSF



BAYLES HOUSE
THIRD FLOOR PLAN
403 GSF

Bayles House Floor Plans



THE PORT JEFFERSON FREE LIBRARY
EXISTING FLOOR PLAN DIAGRAMS FOR THE BAYLES HOUSE
WITH REFERENCE TO MAIN FLOOR & LEASED PACE

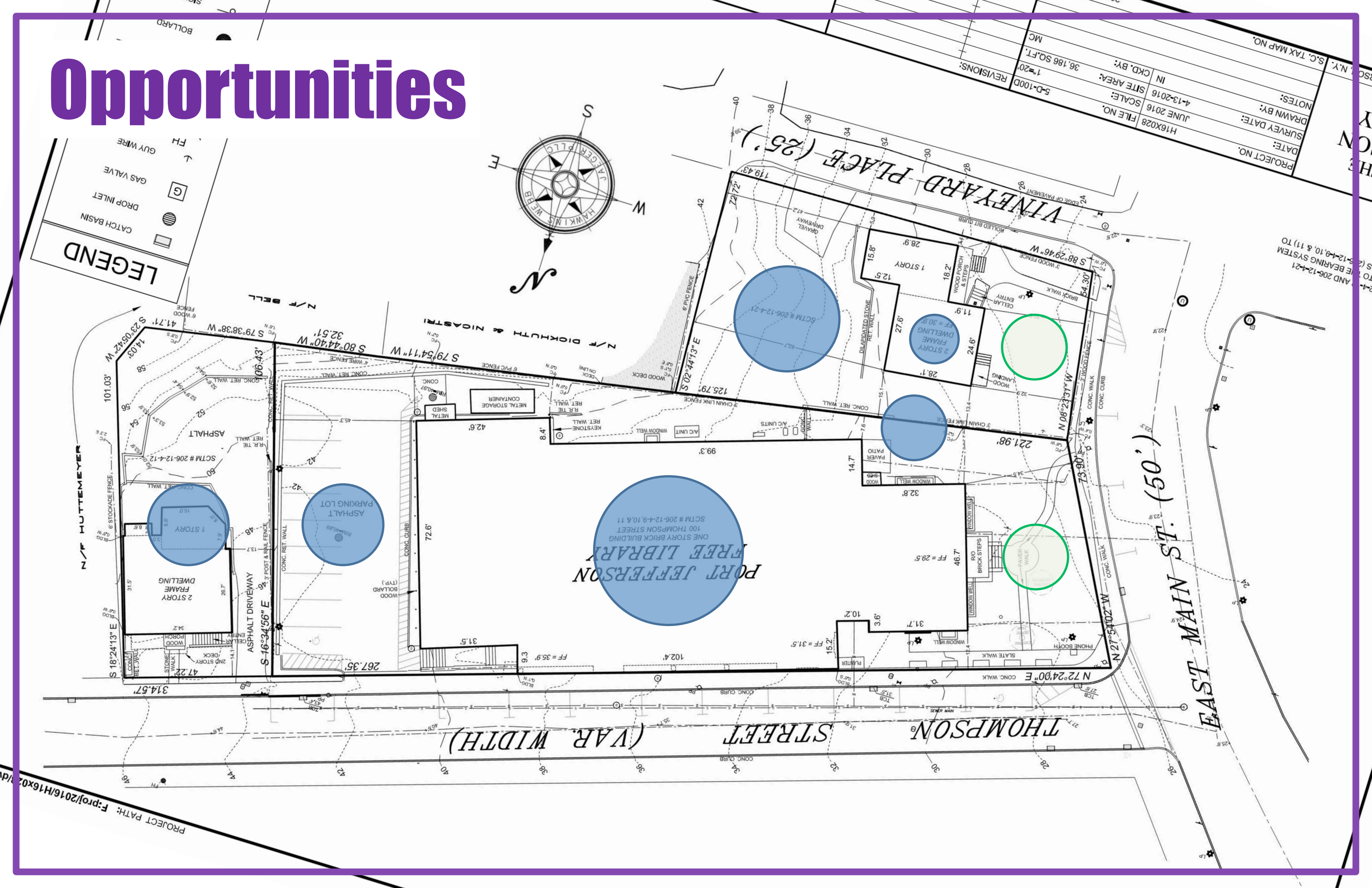


06-20-16

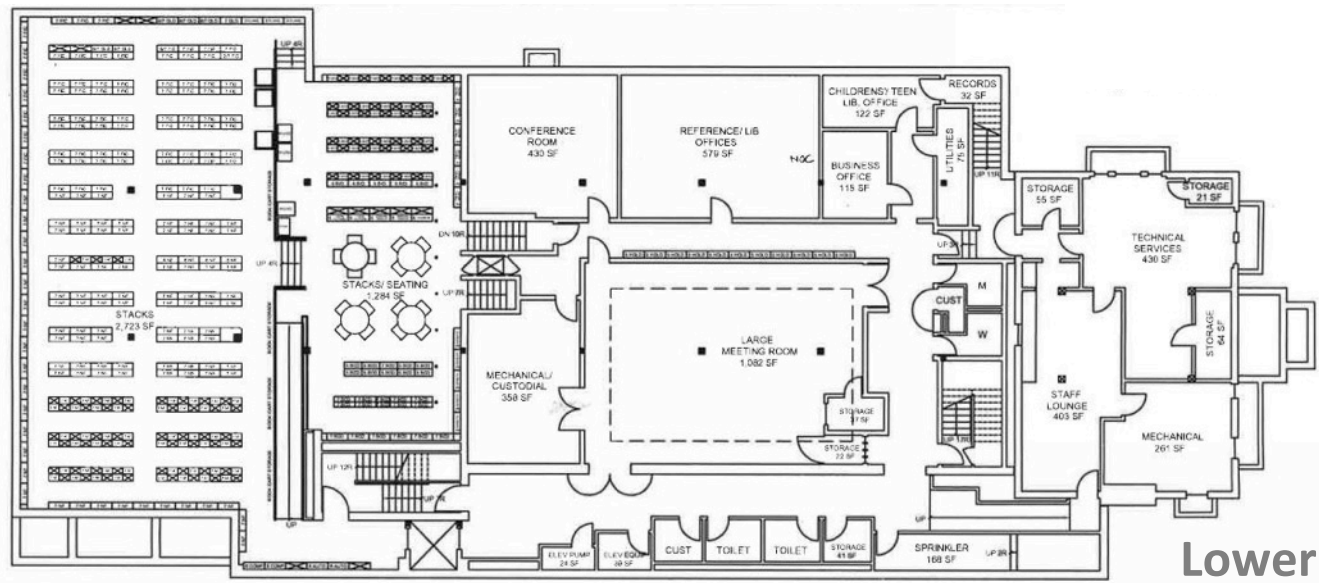
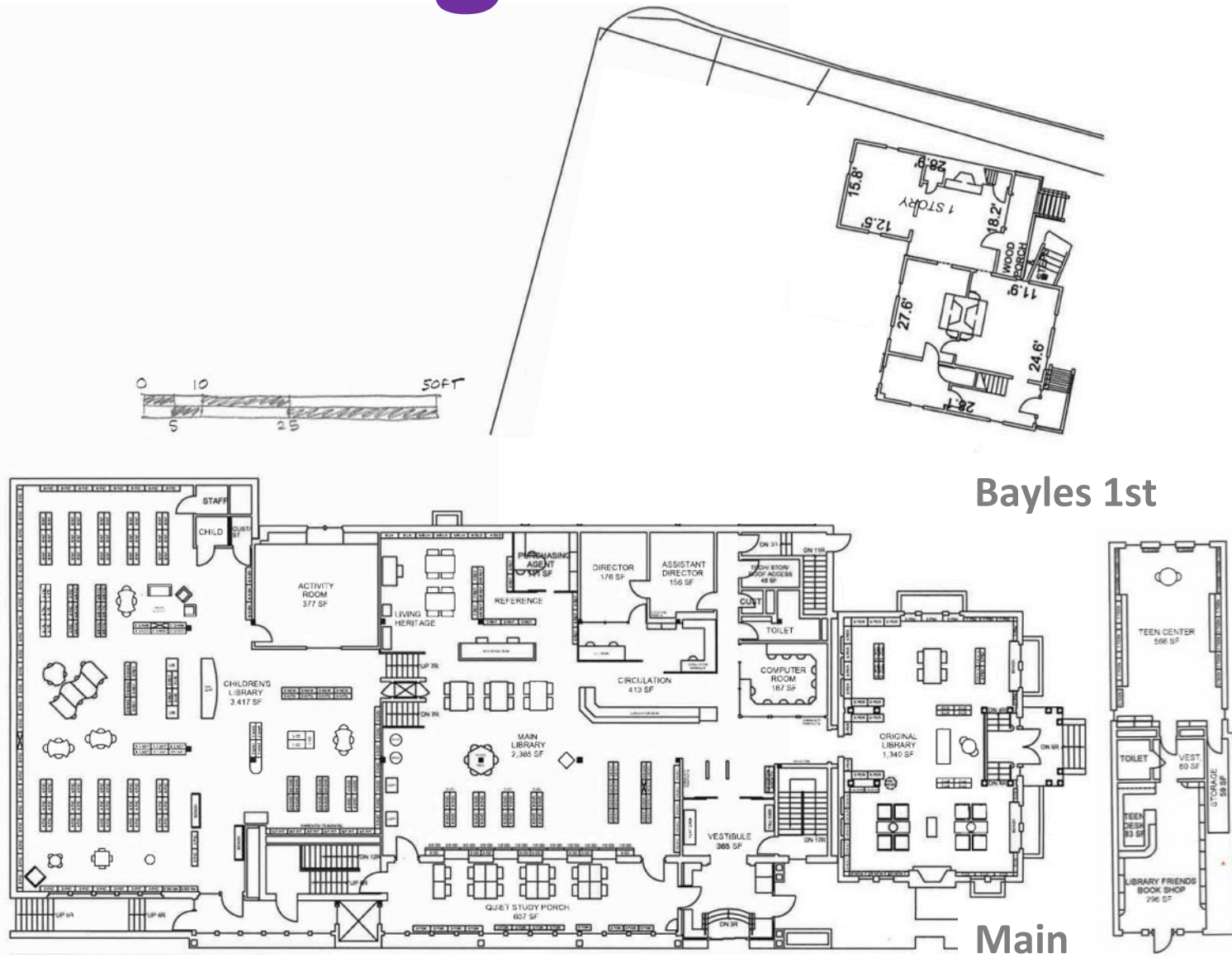
PJL-06

1/16" = 1'-0"

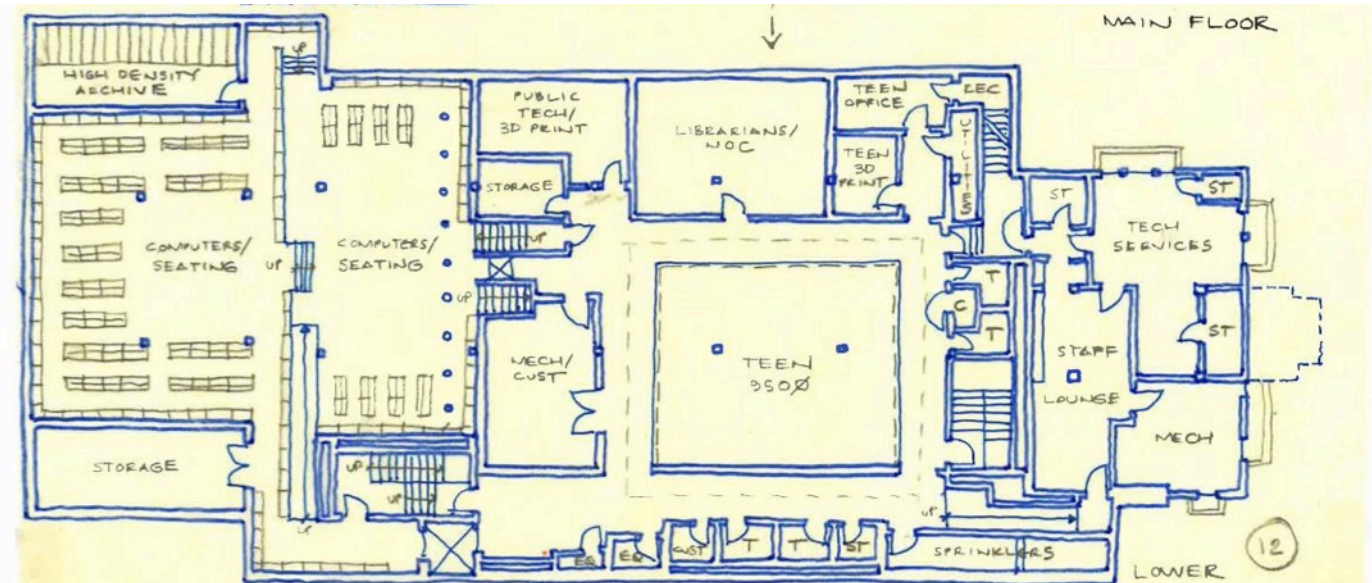
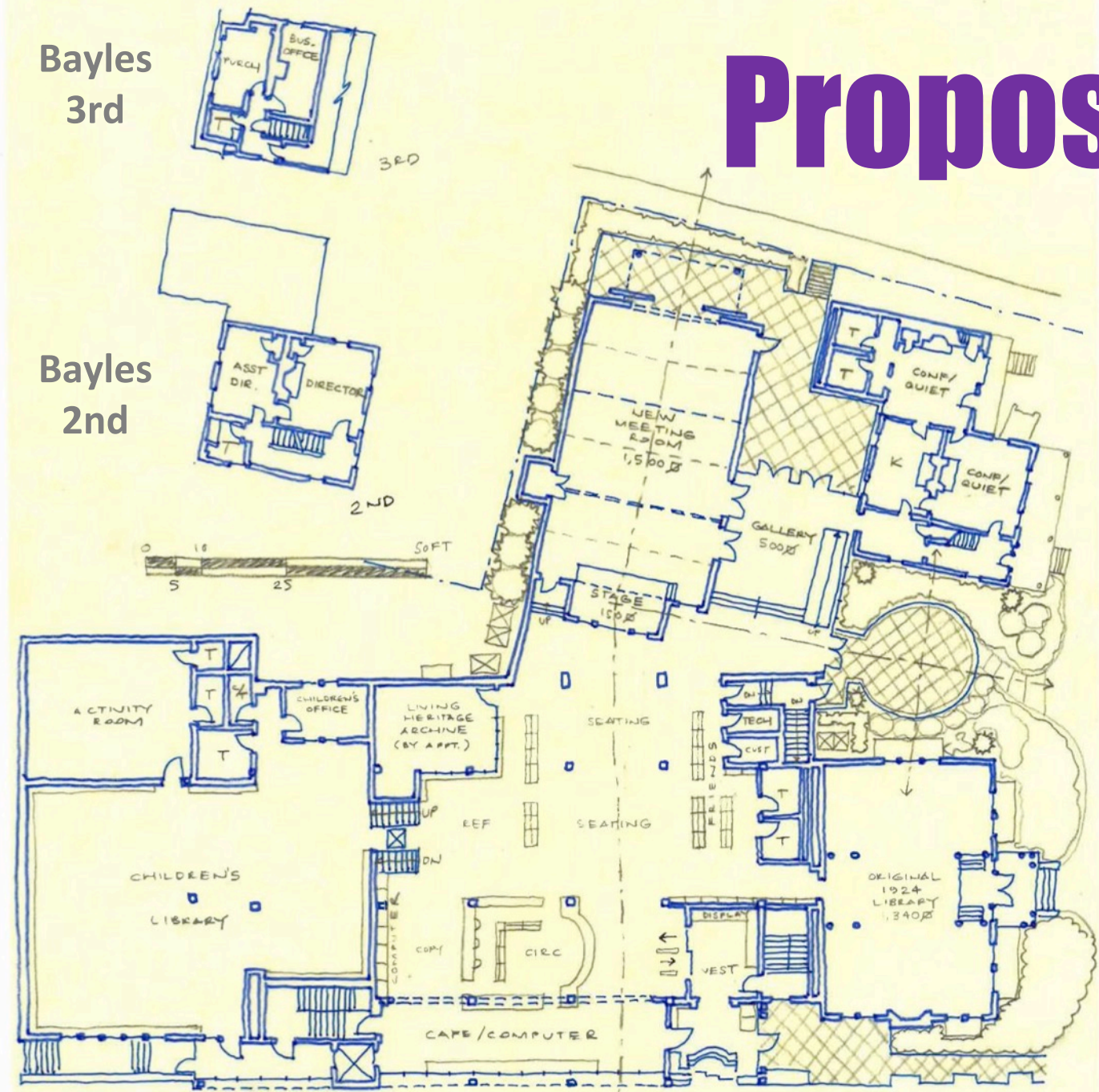
Opportunities



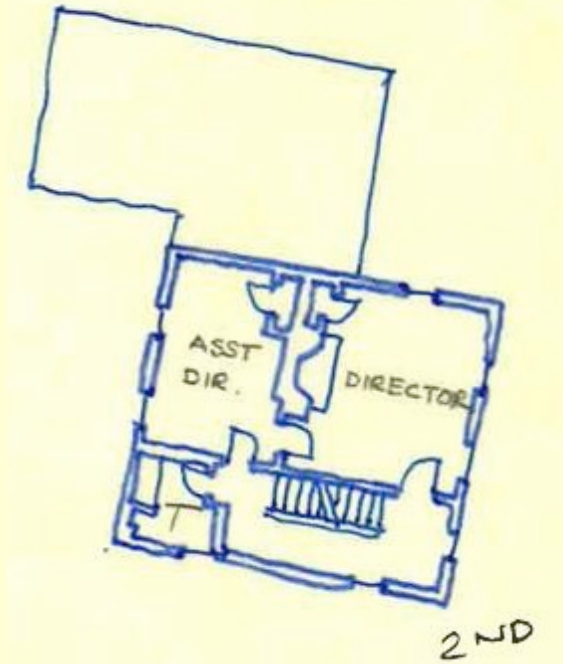
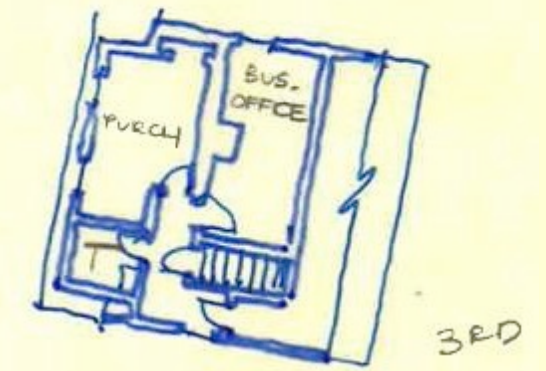
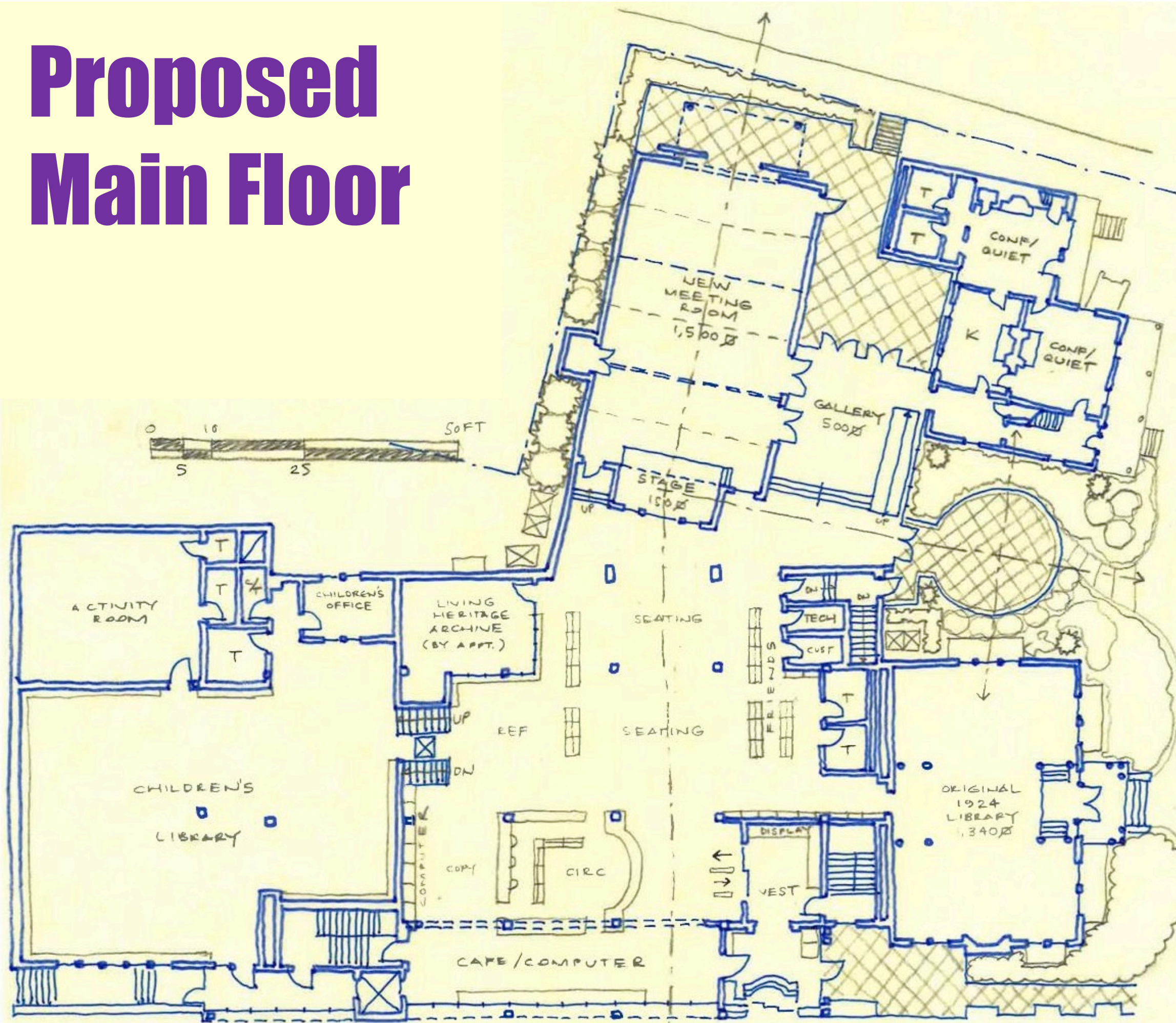
Existing



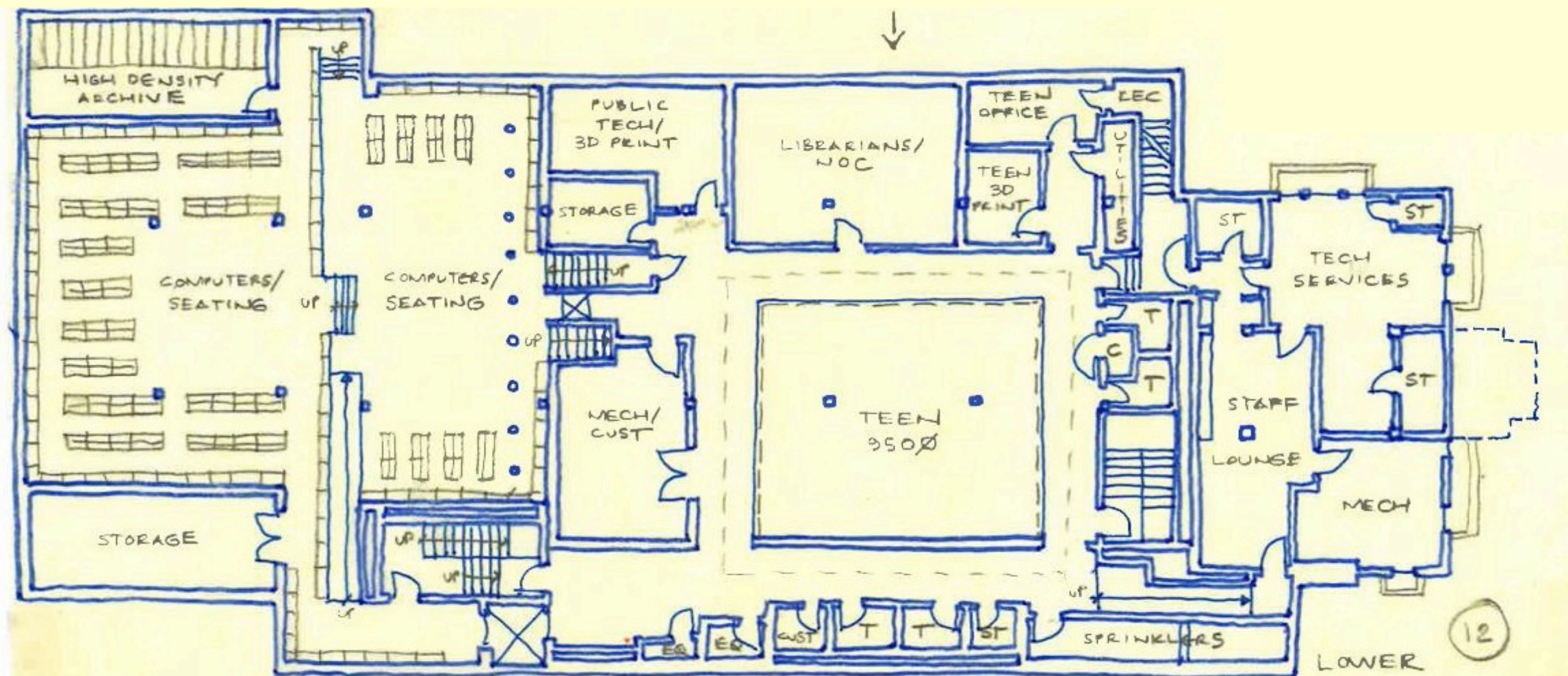
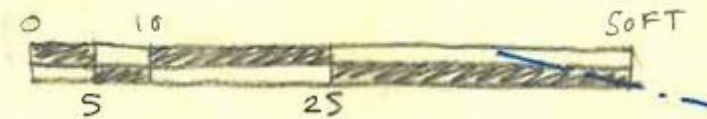
Proposed



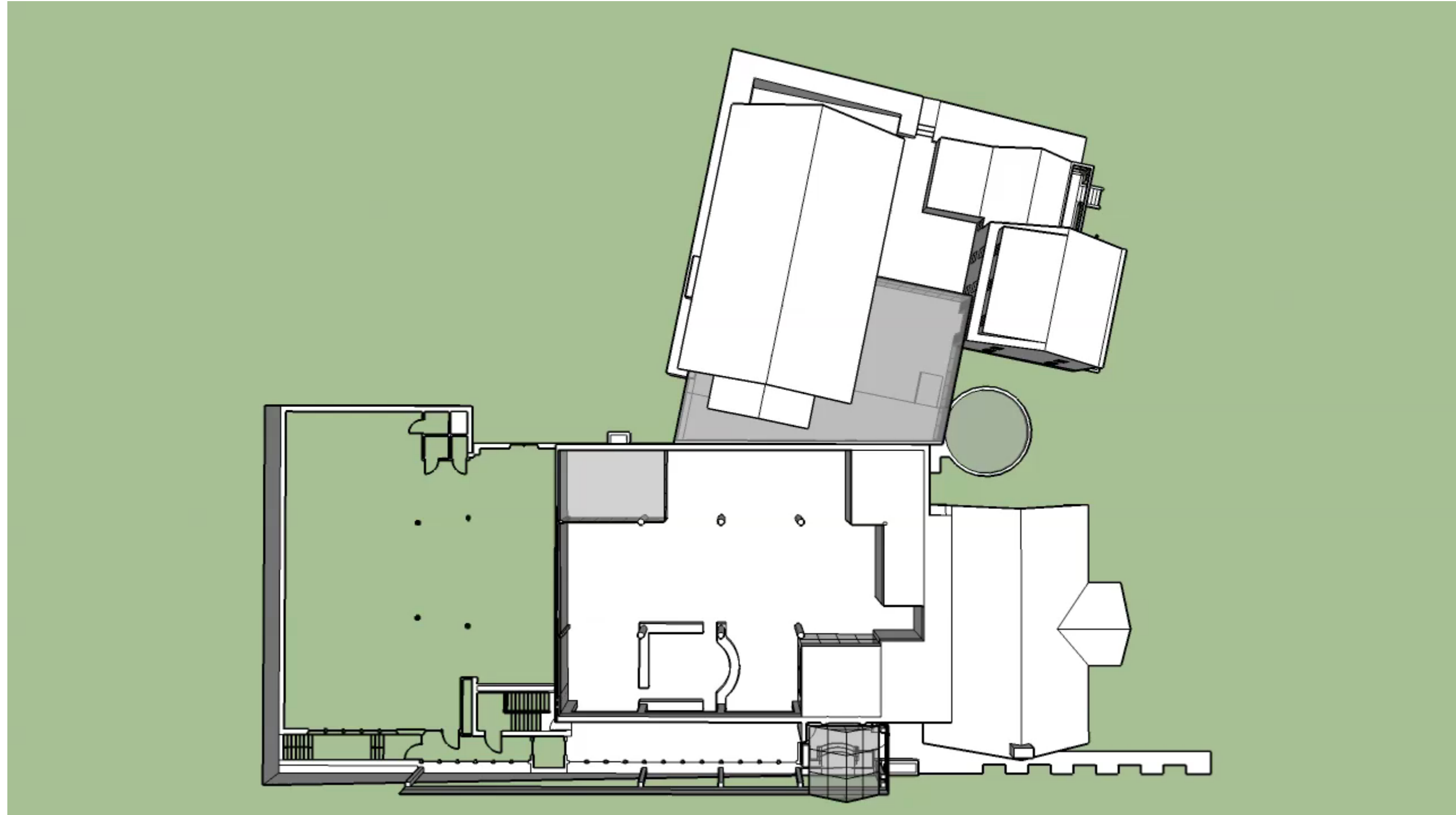
Proposed Main Floor



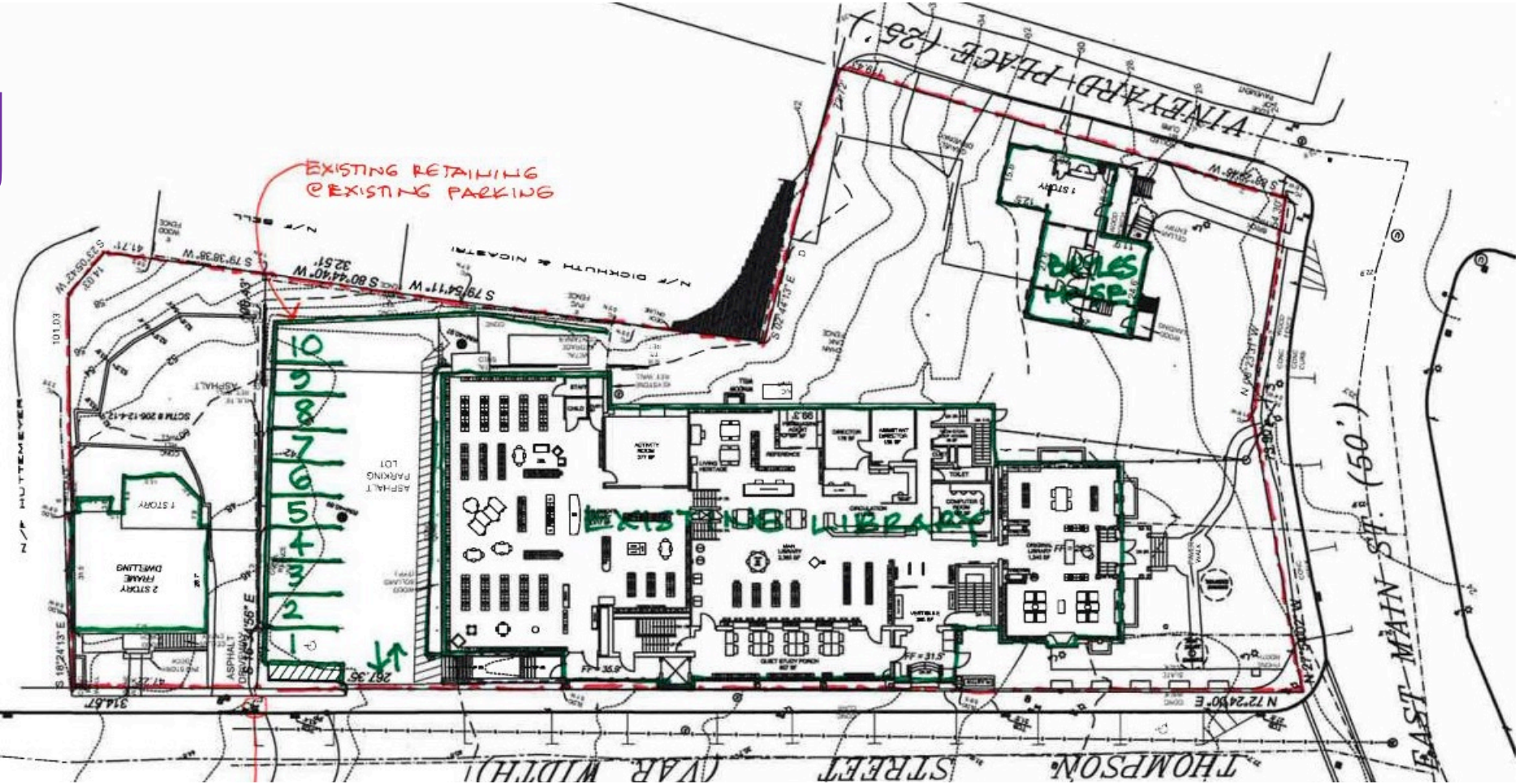
Proposed Lower Floor



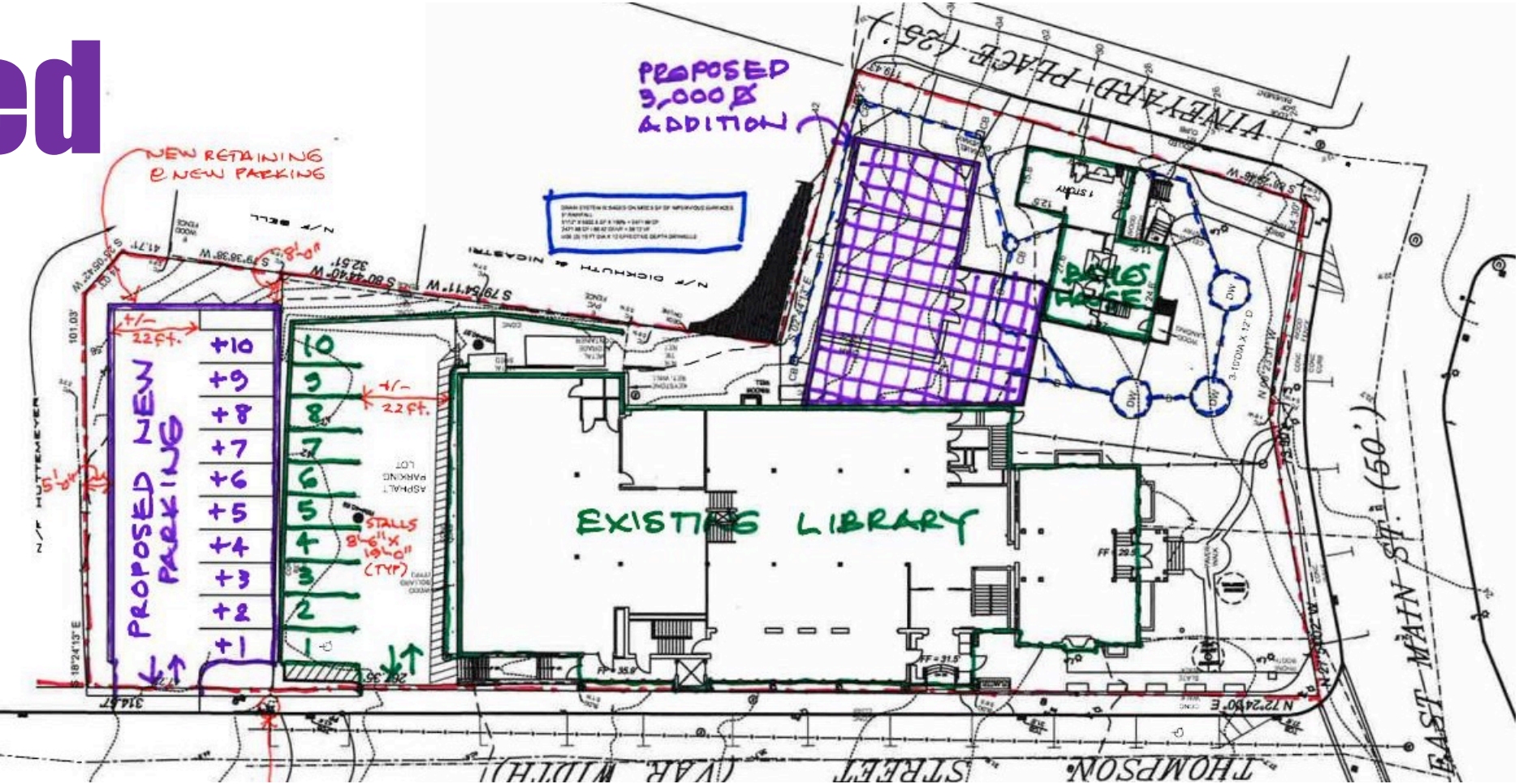
Conceptual 3d Model



Existing

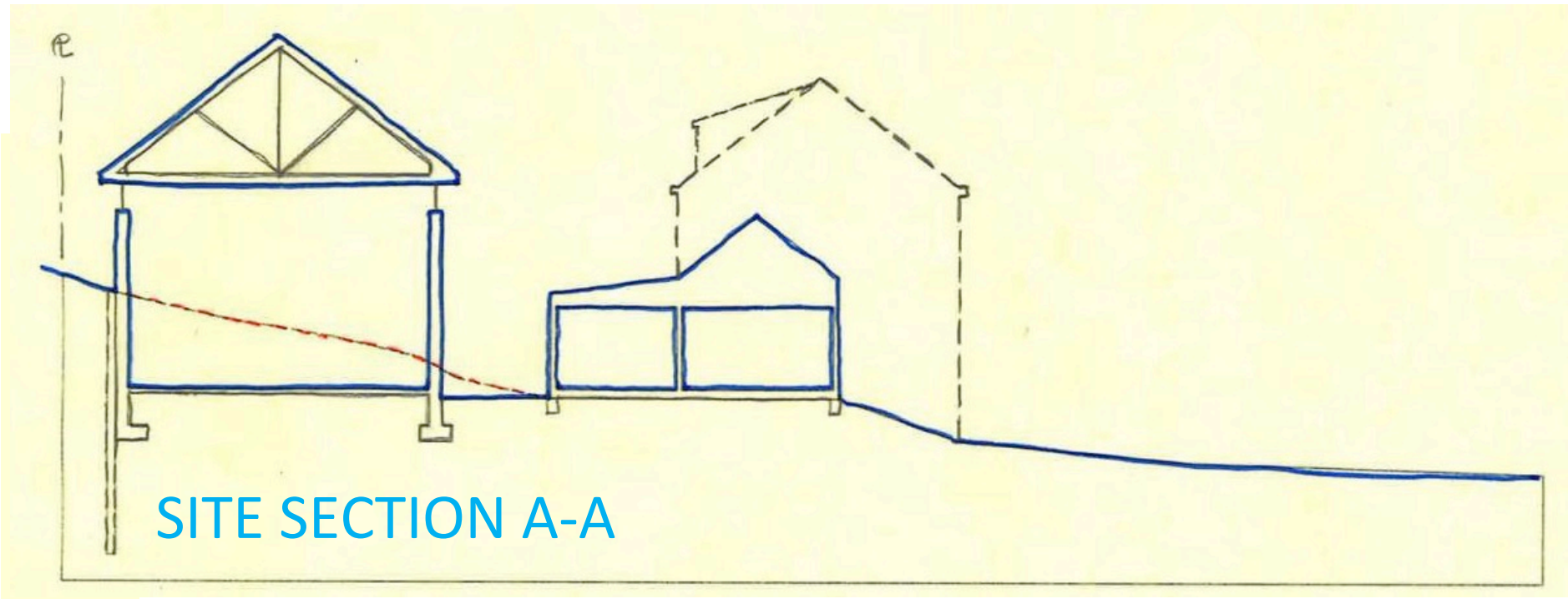


Proposed

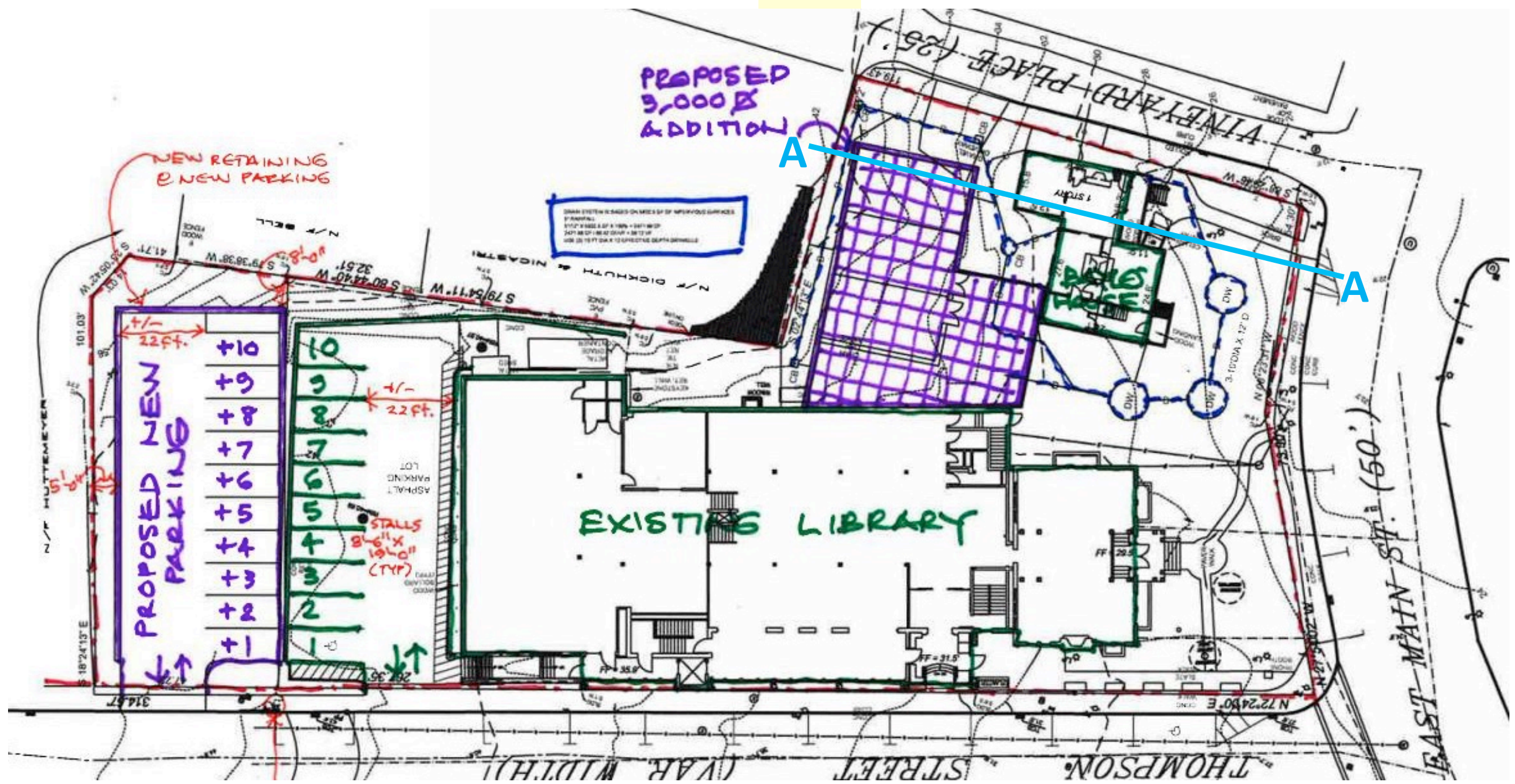


Architects
Landscape Architects
Engineers

Constructability



SITE SECTION A-A



Architects
Landscape Architects
Engineers

Basic Project Components

Renovation of Existing Library

Infrastructure Systems Improvements

Renovation/Preservation of Bayles House

Expansion of Existing Library

Overall Site Work

The Port Jefferson Free Library **Looking to the Future**

**2nd Public Forum to Discuss
Potential Renovation/
Expansion Concepts
November 9, 2016**



**Architects
Landscape Architects
Engineers**